



DOMINATOR*PLUS*

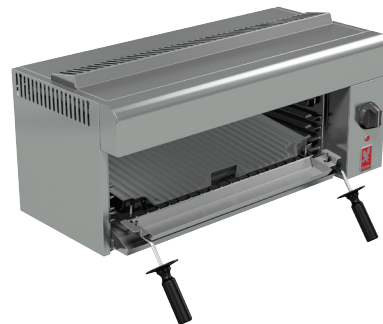
E3532 Grill

Key features

- Single element controlled by energy regulator
 - Easy to adjust cooking temperature
- Double-cased with internal insulation
 - Provides optimal heat retention
- Supplied with reversible brander
 - Increases cooking versatility
- Five position shelf runners
 - Provides flexible cooking options
- Oil collection tray mounted on grid shelf
 - Catches any liquid grese during grilling
- Removable drip tray
 - Catches grease and debris during grilling
- All stainless steel exterior, cast iron chamber linings
 - Easy to clean, long lasting and robust

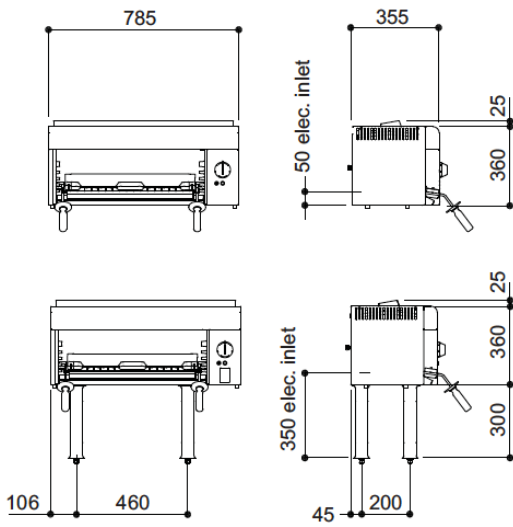
Accessories

- Brander
- Brander carrier
- Floor stand
- Wall bracket
- Bench Legs



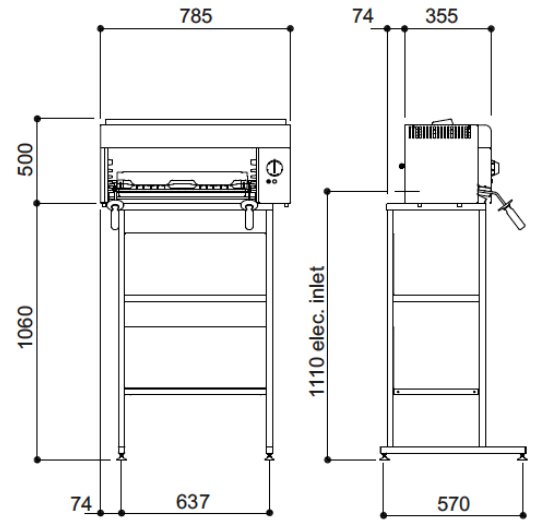
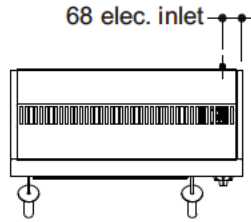
Similar Models

- E3512 electric grill
- G3512 gas grill
- G3532 gas grill



On bench legs

Measurements *in mm*



On stand

Specification details

| | |
|------------------------------------|-----------------|
| Electrical rating (kW) | 3.9 |
| Electrical supply voltage | 230V N~ |
| Amps per phase (A) | L1: 16.7 |
| Weight (kg) | 31 |
| Packed weight (kg) | 38 |
| Packed dimensions (w x d x h - mm) | 800 x 400 x 550 |
| GTIN number | |

Installation notes

Adequate ventilation must be provided to supply sufficient fresh air and to allow easy removal of any such products that may present a risk to health. Please consult current legislation for details that relate to specific locations.

A clearance of 150mm should be observed between appliance and any combustible wall.

