

Combi steamer  
**FlexiCombi**  
Electric combi steamer FlexiCombi Classic 20.2 MAXI  
MKN-No.: FKECOD221C



world of cooking

### Features

- analogue setting and digital display for cooking temperature, humidity, cooking time and core temperature
- **Manual operation concept** with 6 cooking modes: SoftSteaming, Steaming, ExpressSteaming, Convection, CombiSteaming and Perfection
- 100 cooking processes can be saved
- **DynaSteam** – dynamic process-oriented steam quantity adjustment depending on product load
- dynamic autoreverse fan for extremely uniform cooking results
- 5 fan speeds programmable, even 10 speeds in connection with fan intervals
- fan safety brake
- integrated grease separation system
- **hygienic cooking chamber door with sealed triple glazing**
- right hand hinged door
- **hygienic cooking chamber** of corrosion resistant stainless steel
- **ClimaSelect** – Climate control in steps of 25 %
- **Ready2Cook** – preheating, cooling down, climate preparation
- internal core temperature measurement (up to 99 °C)

### Accessories

- transport trolley rack, standard configuration, with 20 inserts for GN 2/1, with tilt protection for containers, distance between insert levels 65 mm
- **EasyIn roll-in system** for transport trolley racks, to compensate for any unevenness of the floor up to 10 mm
- preheat bridge



### Option

- **WaveClean** – automatic cleaning system, siphon is included with the appliance
- **integrated shower hose**
- Internal multipoint core temperature probe
- Connection for external multipoint core temperature probe (cannot be retrofitted)
- IPX 6 – Protection against strong jets of water
- Marine version
- USPH version on request
- Prison version
- Special voltage
- Interface for connection to an energy optimization system according to DIN 18875 and potential free contact

### Product safety

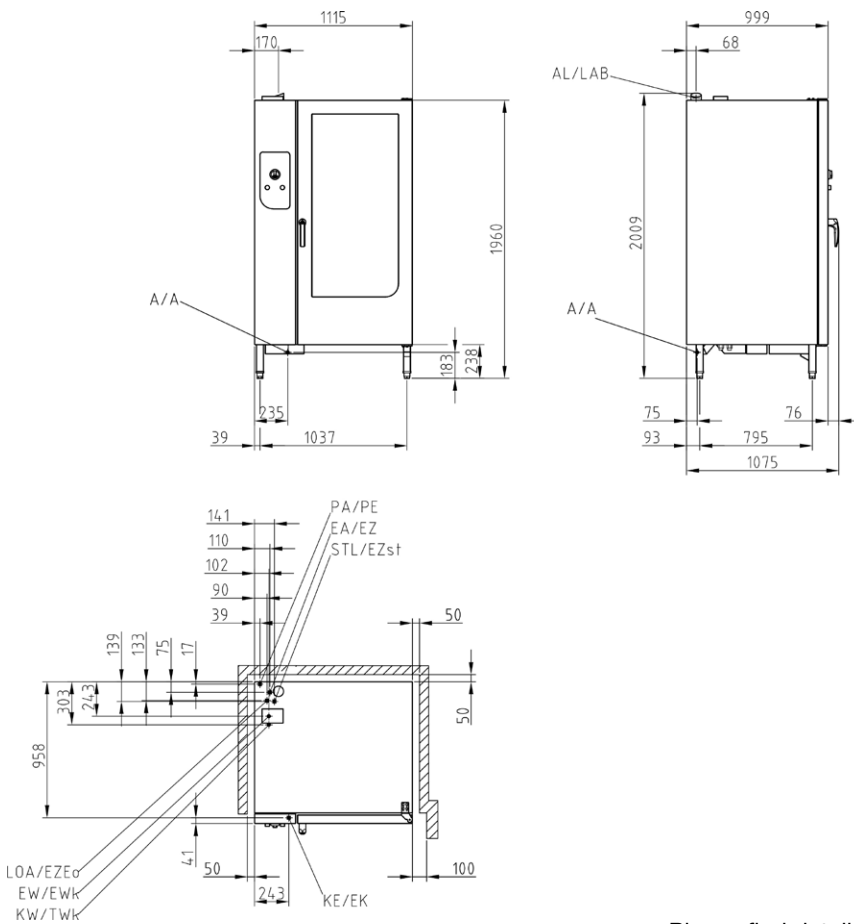


Combi steamer  
**FlexiCombi**  
 Electric combi steamer FlexiCombi Classic 20.2 MAXI  
 MKN-No.: FKECOD221C



world of cooking

FKECOD221C



Please find detailed information at  
[www.mkn.com/en/login](http://www.mkn.com/en/login)

## General installation interfaces

### Interfaces provided on site

- Electricity connection (EA/EZ)
- Connection to cold water mains (KW/TWK)
- Soft water (EW/EWK)
- Waste water connection (A/A)
- Exhaust air (AL)

Appliance dimensions (LxWxH) (mm)	1115 x 999 x 1960
Housing material	1.4301
Dimensions incl. packing (LxWxH <sup>2</sup> )(mm)	1160 x 960 x 2200
Net weight (kg)	363
Gross weight (kg)	404
max. load weight (kg)	150
Installation instructions; safety clearance in mm	
at the rear	50
left and right respectively	50
recommended clearance for service purposes	500
when the rack trolley is parked on the left	800
Clearance to heat sources on the left	500
Clearance to deep fat fryers on the left and right respectively	at least the length of the hand shower

Combi steamer  
**FlexiCombi**  
 Electric combi steamer FlexiCombi Classic 20.2 MAXI  
 MKN-No.: FKECOD221C



world of cooking

FKECOD221C

Capacity	
Quantity of cooked food (kg)	20x 15
Shelf inserts	20
GN 1/1 (530 x 325 x 65 mm)	40
GN 2/1 (530 x 650 x 65 mm)	20
FlexiRack (530 x 570 x 65 mm)	20
Plates (Ø 28 cm on FlexiRack grids)	120
Plates (Ø 32 cm – plate rack trolley)	120
Meals per day	300 - 500

Electricity supply (380 V)	
Nominal power consumption (kW)	55.0
Voltage (V)	380 3 (N)PE AC
Fuse protection (A)	3 x 100
Frequency range (Hz)	50 / 60

Electricity supply (400 V)	
Nominal power consumption (kW)	60.9
Voltage (V)	400 3 (N)PE AC
Fuse protection (A)	3 x 100
Frequency range (Hz)	50 / 60

Electricity supply (415 V)	
Nominal power consumption (kW)	65.5
Voltage (V)	415 3 (N)PE AC
Fuse protection (A)	3 x 100
Frequency range (Hz)	50 / 60

Electricity supply (440 V)	
Nominal power consumption (kW)	60.9
Voltage (V)	440 3 (N)PE AC
Fuse protection (A)	3 x 100
Frequency range (Hz)	50 / 60

Drinking water cold (KW/TWK)	
Water pressure (bar)	2 - 6
Connection size	DN 20 (G ¾" A)
Quality mmol/l (°dH)	< 4 (22.2)
Consumption cleaning (l)	32

Soft water (EW/EWk)	
Water pressure (bar)	2 - 6
Connection size	DN 20 (G ¾" A)
Quality mmol/l (°dH)	< 0.9 (5)
Consumption steaming (l/h)	48
Consumption combisteaming (l/h)	10.6
Consumption cleaning (l)	3

Waste water (A/A)	
Volume flow max. (l/min.)	10
Connection size	DN 50
Quality	max. 80 °C

According to VDI 2052 with a connection voltage of 400 V.	
Operated without steam condensate hood	
Heat emission latent (W)	10962
Heat emission sensitive (W)	7308
Steam output (g/h)	16139
Noise level (db (A))	< 70
Type of protection	IPX5

Combi steamer  
**FlexiCombi**  
 Electric combi steamer FlexiCombi Classic 20.2 MAXI  
 MKN-No.: FKECOD221C



world of cooking

FKECOD221C

### Further features

- one hand door handle
- non-contact door switch, door lock positions with end stop
- insertable door seal – end user replaceable
- drip pan with permanent drainage
- cooking chamber with halogen lighting behind shockproof glass
- manual cleaning programme (does not apply to WaveClean option)
- maintenance instructions for external water filters
- energy supply as required
- reduced heat output (E/2)
- **Integrated heat exchanger**
- HACCP basic version
- integrated HACCP memory
- timer with start time pre-selection
- manual steam injection/humidification
- USB interface, e.g. for software updates\*\*
- loudspeaker, adjustable tone control
- audible signal after cooking time has elapsed
- Potential free contact for external steam condensate hood
- direct waste water connection according to DVGW is possible

### Special equipment

#### 2/1 GN trays (please refer to accessories brochure)

202388	Granite enamelled tray, 20 mm deep
10017317	Granite enamelled tray, 40 mm deep
202390	Granite enamelled tray, 65 mm deep
202383	Baking tray – perforated Roasting tray
202386	Roasting tray – non-perforated
206103	Grid
202065	Container, non-perforated, 20 mm deep
202070	Container, non-perforated, 40 mm deep
202066	Container, non-perforated, 65 mm deep
202072	Container, non-perforated, 100 mm deep
202380	Container, perforated, 40 mm deep
202381	Container, perforated, 60 mm deep
202382	Container, perforated, 95 mm deep
10018573	Roll-in rack for GN 2/1 crosswise insertion (incl. EasyIn)
201792	Thermal insulation cover
10018228	Plate rack trolley (incl. EasyIn)
10019787	Thermal insulation cover for plate rack trolley
TWO_IN_ONE	WaveClean two-in-one cleaning cartridge
303326	Detergent (10 litre canister)
303323	Manual spray gun
10016941	Floor fastening for floor mounted appliances

\*\* without surcharge under [www.mkn.com](http://www.mkn.com)

MKN Maschinenfabrik  
 Kurt Neubauer GmbH & Co. KG  
 Halberstaedter Strasse 2a  
 38300 Wolfenbuettel / Germany

Phone +49 (0)5331 89-0  
 Fax +49 (0)5331 89-280  
 E-mail [verkauf@mkn.de](mailto:verkauf@mkn.de)  
[www.mkn.com](http://www.mkn.com)



Please find detailed information at [www.mkn.com/en/login](http://www.mkn.com/en/login)

Subject to technical modifications!  
 Version: 8.04.2020