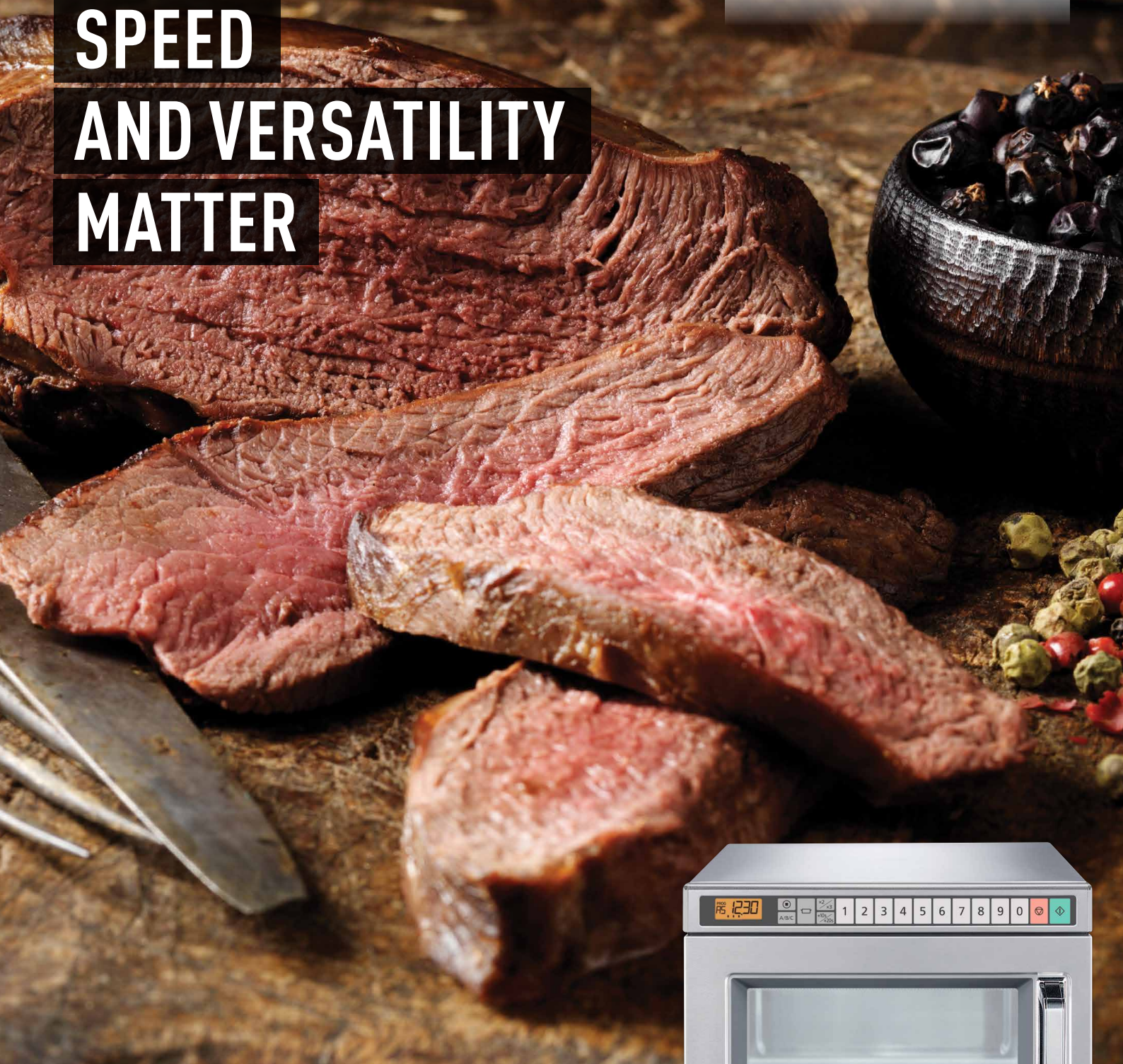


**Panasonic**

**SPEED  
AND VERSATILITY  
MATTER**



**NE-1843 MANUAL  
NE-1853 TOUCH**



For fast single portion  
throughput in busy establishments,  
vending, fast food sites and public  
house kitchens.

[www.panasonic.co.uk](http://www.panasonic.co.uk) Sales Office: 01344 476516

# NE-1843 / NE-1853

## HEAVY DUTY COMPACT

- NE-1843 and NE-1853 (1800W)
- Programmable touch pads, 15 power levels (NE-1853)
- Dial control, 3 power levels (NE-1843)
- Stainless steel body and cavity
- Easy to clean interior with removable ceiling plate
- Dual emission top and bottom energy feed ensures even heating
- Clear LCD display of power levels, time and self diagnostic codes
- Removable air filter for easy cleaning
- Two ovens can be securely stacked one on top of another
- LED Interior light can be programmed to flash at the end of the cooking cycle
- 10/20 second boost button. Just a single press provides an additional 10/20 seconds if needed
- Self diagnostic
- 30 programs to include 2 and 3 stage heating (NE-1853)
- Programmed option for x2 and x3 quantity heating (NE-1853)
- Program lock to allow one touch operation (NE-1853)
- Repeat function (for manual heating only) (NE-1853)
- Clean air filter reminder (NE-1853)
- Cycle counter – records the number of operations (NE-1853)
- Beep tone option (NE-1853) can be silenced
- Pull open door with wide easy view window

### PLACEMENT OF YOUR OVEN

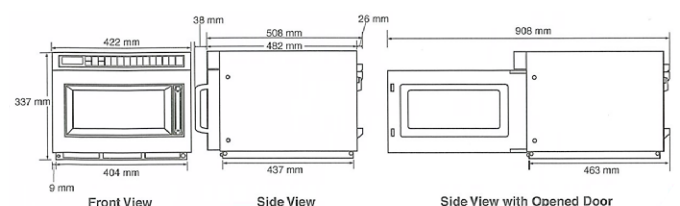
- Oven must be placed on a flat, stable surface. For proper operation, the oven must have sufficient air flow.
- A gap of at least 5cm (2") must be available at the right and left hand sides and back wall of the oven.
- A minimum space of 20cm (8") must be left above the oven and the 2 exhaust vents at the rear.
- Do not place the oven on a shelf directly above or beside a gas or electric hob or cooker. This may cause damage to the oven.
- It is dangerous to position this oven on a shelf which is so high that food and accessories cannot be safely removed by the user.

### POWER SUPPLY

- NE-1843 and NE-1853 13 amp

| TECHNICAL SPECIFICATIONS   |                                   |   |
|----------------------------|-----------------------------------|---|
|                            | NE-1843                           | NE-1853   |
| Power Source               | 50Hz, Single Phase<br>230 - 240 V | 50Hz, Single Phase<br>230 - 240 V   |
| Required Power             | 12.3 A 2830 W                     | 12.3 A 2830 W   |
| Output*                    | High                              | 1800 W*   |
|                            | Medium<br>High                    | P9: 90%<br>P8: 80%<br>P7: 70%<br>P6: 60%  |
|                            | Medium                            | P5: 50%<br>P4: 40%  |
|                            | Low                               | P3: 30%<br>P2: 25%  |
|                            | Defrost                           | P1: 340 W   |
|                            | Off                               | P0: 0%  |
|                            | Heat from<br>top down             | PU1: 50%<br>PU2: 25%  |
|                            | Heat from<br>bottom               | PL1: 50%<br>PL2: 25%  |
| Frequency                  | 2450 MHz                          | 2450 MHz  |
| Outside Dimentions (WxDxH) | 422mm x 508mm x 337mm             | 422mm x 508mm x 337mm   |
| Cavity Dimentions (WxDxH)  | 330mm x 310mm x 175mm             | 330mm x 310mm x 175mm   |
| Net weight                 | 30.0 kg                           | 30.0 kg   |
| Timer                      | —                                 | 30 minutes (digital) / 10 touch pads. Maximum programmable time for single stage heating P1 and P0 = 30 minutes<br>P10-P2, PU1-PL2 = 15 minutes |

\*IEC Test Procedure. Specifications subject to change without notice.



### FOR FURTHER INFORMATION

Sales Office Tel: 01344 476617 Fax: 01344 853217 Email: commercial.ovens@eu.panasonic.com Service Tel: 01933 665313

www.panasonic.co.uk